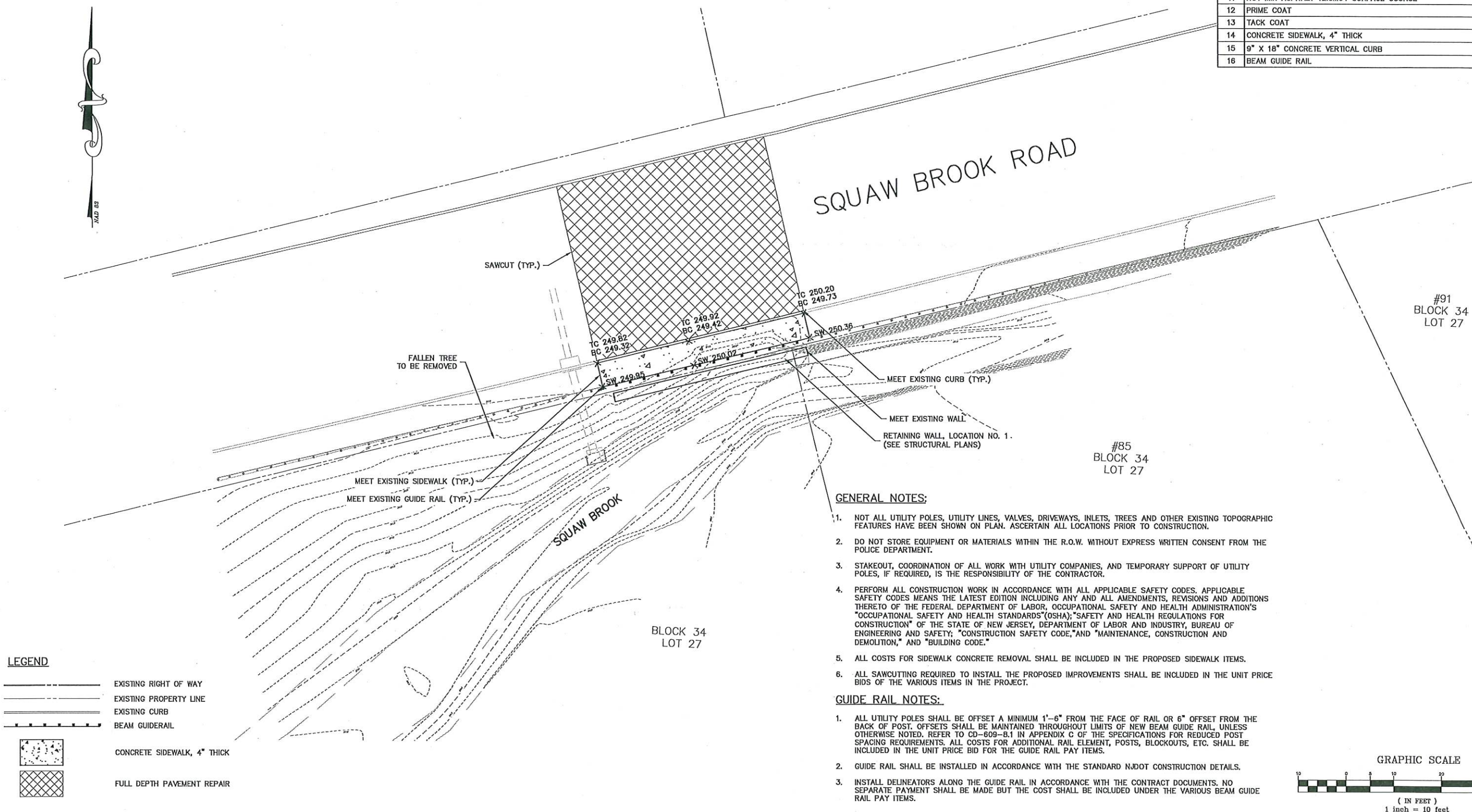


ITEM	TO BE CONSTRUCTED	UNIT	QUANTITY
7	CLEARING SITE	L.S.	L.S.
8	EXCAVATION, UNCLASSIFIED	C.Y.	62
9	DENSE-GRADED AGGREGATE BASE COURSE, 6" THICK	S.Y.	195
10	HOT MIX ASPHALT 19.5M64 BASE COURSE	TON	50
11	HOT MIX ASPHALT 12.5M64 SURFACE COURSE	TON	10
12	PRIME COAT	GAL.	50
13	TACK COAT	GAL.	30
14	CONCRETE SIDEWALK, 4" THICK	S.Y.	30
15	9" X 18" CONCRETE VERTICAL CURB	L.F.	45
16	BEAM GUIDE RAIL	L.F.	50



LEGEND

--- EXISTING RIGHT OF WAY
--- EXISTING PROPERTY LINE
--- EXISTING CURB
--- BEAM GUIDERAIL

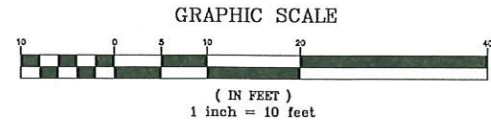
[Pattern Box] CONCRETE SIDEWALK, 4" THICK
[Pattern Box] FULL DEPTH PAVEMENT REPAIR

GENERAL NOTES:

1. NOT ALL UTILITY POLES, UTILITY LINES, VALVES, DRIVEWAYS, INLETS, TREES AND OTHER EXISTING TOPOGRAPHIC FEATURES HAVE BEEN SHOWN ON PLAN. ASCERTAIN ALL LOCATIONS PRIOR TO CONSTRUCTION.
2. DO NOT STORE EQUIPMENT OR MATERIALS WITHIN THE R.O.W. WITHOUT EXPRESS WRITTEN CONSENT FROM THE POLICE DEPARTMENT.
3. STAKEOUT, COORDINATION OF ALL WORK WITH UTILITY COMPANIES, AND TEMPORARY SUPPORT OF UTILITY POLES, IF REQUIRED, IS THE RESPONSIBILITY OF THE CONTRACTOR.
4. PERFORM ALL CONSTRUCTION WORK IN ACCORDANCE WITH ALL APPLICABLE SAFETY CODES. APPLICABLE SAFETY CODES MEANS THE LATEST EDITION INCLUDING ANY AND ALL AMENDMENTS, REVISIONS AND ADDITIONS THERETO OF THE FEDERAL DEPARTMENT OF LABOR, OCCUPATIONAL SAFETY AND HEALTH ADMINISTRATION'S "OCCUPATIONAL SAFETY AND HEALTH STANDARDS"(OSHA); "SAFETY AND HEALTH REGULATIONS FOR CONSTRUCTION" OF THE STATE OF NEW JERSEY, DEPARTMENT OF LABOR AND INDUSTRY, BUREAU OF ENGINEERING AND SAFETY; "CONSTRUCTION SAFETY CODE,"AND "MAINTENANCE, CONSTRUCTION AND DEMOLITION," AND "BUILDING CODE."
5. ALL COSTS FOR SIDEWALK CONCRETE REMOVAL SHALL BE INCLUDED IN THE PROPOSED SIDEWALK ITEMS.
6. ALL SAWCUTTING REQUIRED TO INSTALL THE PROPOSED IMPROVEMENTS SHALL BE INCLUDED IN THE UNIT PRICE BIDS OF THE VARIOUS ITEMS IN THE PROJECT.

GUIDE RAIL NOTES:

1. ALL UTILITY POLES SHALL BE OFFSET A MINIMUM 1'-6" FROM THE FACE OF RAIL OR 6" OFFSET FROM THE BACK OF POST. OFFSETS SHALL BE MAINTAINED THROUGHOUT LIMITS OF NEW BEAM GUIDE RAIL, UNLESS OTHERWISE NOTED. REFER TO CD-809-B.1 IN APPENDIX C OF THE SPECIFICATIONS FOR REDUCED POST SPACING REQUIREMENTS. ALL COSTS FOR ADDITIONAL RAIL ELEMENT, POSTS, BLOCKOUTS, ETC. SHALL BE INCLUDED IN THE UNIT PRICE BID FOR THE GUIDE RAIL PAY ITEMS.
2. GUIDE RAIL SHALL BE INSTALLED IN ACCORDANCE WITH THE STANDARD NJDOT CONSTRUCTION DETAILS.
3. INSTALL DELINEATORS ALONG THE GUIDE RAIL IN ACCORDANCE WITH THE CONTRACT DOCUMENTS. NO SEPARATE PAYMENT SHALL BE MADE BUT THE COST SHALL BE INCLUDED UNDER THE VARIOUS BEAM GUIDE RAIL PAY ITEMS.



NO.	DATE	DESCRIPTION	SURVEYED BY	DRAWN BY	DESIGNED BY	CHECKED BY

PLOT BY: jason PLOT DATE: 2/21/2024 11:20 AM



BOSWELL ENGINEERING
ENGINEERS - SURVEYORS - PLANNERS - SCIENTISTS
330 PHILLIPS AVENUE, SOUTH HACKENSACK, N.J. 07606
TEL: (201) 641-0770 • FAX: (201) 641-1831
N.J. CERTIFICATE OF AUTHORIZATION NO. 246A27958000

KEVIN J. BOSWELL

PROFESSIONAL ENGINEER N.J. LIC. 32943



JOSEPH A. POMANTE
Digitally signed by Joseph A. Pomante
Date: 2024.02.21 14:10:01 -05'00'

PROFESSIONAL ENGINEER N.J. LIC. 43137

SQUAW BROOK BANK STABILIZATION
CONSTRUCTION PLAN
BOROUGH OF NORTH HALEDON
PASSAIC COUNTY NEW JERSEY

SURVEYED BY: FMK	DESIGNED BY: JAC	SCALE: 1"=10'	JOB NO. NH-806	DATE: 10/30/23
DRAWN BY: JAC	CHECKED BY: JJM			

CADD FILE: NH-806-CP SHEET 2 OF 6